

San Diego Division

[View this email in your browser](#)



## 2nd Quarter 2019

### In this Issue

Superintendent's Report  
Upcoming Events  
Director's Report  
From the Editor  
Amtrak Trip  
In Memoriam  
Division News



### Superintendent's Report

Don Fowler MMR #518

### Upcoming Division Events

#### Spring Meet

May 11, Saturday, Noon to 4pm  
at the **Short Track Railroad**

Located in Vista at the  
Antique Gas & Steam Engine  
Museum

Pizza Lunch, Silent Auction,  
Elections, Layout Tour, Clinics

#### Layout Tour

June 8, Saturday  
Location TBD

### Passing the Torch

After more than sixteen years of service to the San Diego Division alternating the elected positions of Superintendent and Chief Clerk/Paymaster, Ben Sevier and I have announced that we are stepping down from our assignments and will not run for re-election in May.

It has been a lot of fun serving the Division and working with some great people who have been instrumental in making things happen. During our tenure we instituted monthly NMRA events like monthly layout tours, run quarterly Division Meets, and managed five Region Conventions hosted by the San Diego Division.

I would like to publicly thank Ben for his service and his friendship during our tenure together.

### Layout Tour

July 13, Saturday  
Location TBD

### Summer Meet

August 10, Saturday

Located at Peace Lutheran  
Church in Linda Vista

Swap Meet, BBQ, Clinics

### Layout Tour

September 14, Saturday  
Location TBD

### Layout Tour

October 12, Saturday  
Location TBD

---

## Other Upcoming Events

These are other Model  
Railroading events in the  
Division and Region, and by  
local clubs. If you want your  
event listed please contact  
[mailhook@sandiegodivision.org](mailto:mailhook@sandiegodivision.org)

### LA Division events:

*click the link for more information*

[https://www.ladiv-  
nmra.org/events.html](https://www.ladiv-nmra.org/events.html)

**Cajon Division Spring Meet**  
combined with the CIM3  
Summer Event, June 15-16,  
2019, Irvine Park

*click the link for more information*

<http://www.cajondivision.org>

### Arizona Division events:

*click the link for more information*

[http://www.azdiv-  
nmra.org/index.shtml](http://www.azdiv-nmra.org/index.shtml)

### PSR 2019 Regional Convention

Arizona Junction  
September 25 through 29

*click the link for more information*

[https://www.azdiv-  
nmra.org](https://www.azdiv-nmra.org)

He has selflessly given immense contributions to the NMRA at the Division, Region and National level. Folks like Ben are few and far between and I'm very grateful for the counsel, support and leadership that he has provided over the years. I would be remiss if I didn't also acknowledge the members of our Division Planning Committee who commit their time and effort to ensure that we are an active and fun Division.

New leadership is a good thing. New leaders may have different insights and contacts with others that will lead to new opportunities for our members. They could bring new ideas and innovations to the Division that spark new memberships and rekindle the interest of inactive members. And just so you know, Ben and I plan to remain active in the Division and are happy to serve on the Division Planning Committee if the new leadership wants us to.

Per the NMRA Division Superintendent's Handbook, the **Superintendent** responsibilities include:

- Provide positive leadership and direction for the Division.
- Serve as the Chief Executive Officer of the Division.
- Schedule and preside over Division BOD and General Membership meetings.
- Vote on organizational business only in the event of a tie situation (or as dictated in Division by-laws).
- See that all orders and resolutions of the Board are carried into effect.
- Be responsible for the overall planning and coordination of the organization activities including publicity.
- Sign all contracts or other instruments authorized by the BOD.
- Execute all legal documents requiring the signature of the person authorized to represent the membership except where the signing and execution thereof shall expressly be delegated to some other officer or agent by the Board of Directors.
- Keep Division members informed of the activities of the Region Board and NMRA Board of Directors actions and activities.
- Maintain appropriate liaison with the



---

## From the Editor

The Mail Hook needs interesting articles and features. Please consider writing and submitting an article on a Model Railroading topic to share your knowledge with other modelers. A how-to article or highlighting a project you are working on. Maybe you could write an article about your layout progress, including pictures. Earn AP points or just make it a fun challenge. Start thinking now because the next Mail Hook deadline is July 1.

If you are a member of a club in the division and would like to see your club and club layout featured in the Mail Hook; please submit an article and pictures too!

I hope you enjoy reading the Mail Hook, and please consider contributing.

-Ryan Di Fede  
Mail Hook Editor  
[mailhook@sandiegodivision.org](mailto:mailhook@sandiegodivision.org)

**This issue's contributors of articles, information, and pictures:** Don Fowler, Trudy Seeley, and Roger Gredvig

Region Superintendent/President and Office Manager to include reporting new Division Officers as soon as they are elected or appointed.

- Respond promptly to all requests for information from their Region and the NMRA.
- Appoint various committee chairpersons and ad hoc committee members as needed. Be a member ex-officio of all committees he/she appoints. Typically the list of chairpersons will include, but not necessarily be limited to:
  - Newsletter Editor
  - Webmaster
  - Membership Chair (Recruiting & Retention)
  - Achievement Program Chair
  - Contest Program Chair
  - Education/Clinic Program Chair
  - Youth Program Chair
  - Nominations Committee Chair

From the same handbook, the responsibilities of the **Chief Clerk** include:

- Maintain the written records and legal record of the Division.
- Record and maintain official minutes of all Division Board Meetings and formal meeting of Division membership.
- Maintain the membership records of the Division
- Insure timely correspondence to Division Members regarding Division activities and matters.
- See that Division events are publicized locally and in both the Regions Newsletter and in the NMRA Magazine.

From the same handbook, the responsibilities of the **Paymaster** include:

- Maintain the financial records of the Division.
- Make disbursements of Division funds on behalf of the Division.
- Collect and process funds receivable for the Division.
- Provide a periodic (not less often than annual) financial report to the Directors of the Division and the active Division membership.

---

**Submission Guidelines:**

Contributions of articles on any railroad or model-railroading topic of interest to the membership are welcome. There is no compensation. If you are interested in submitting articles, event information, or other information of interest to members of the Division, please follow these guidelines:

1. Please Submit by email to the Mail Hook Editor at [mailhook@sandiegodivision.org](mailto:mailhook@sandiegodivision.org), with the submission attached as a text document or in the body of email message. Pictures can be attached separately to the same email.

2. Keep in mind that submissions may be edited for length or formatting, or not used, at the discretion of the editor.

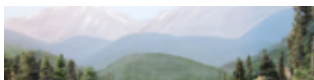
Following are the quarterly deadlines for submitting to the Mail Hook:

January 2  
April 1  
July 1  
October 1

---

**In Memoriam:  
Pastor Burton Maxwell**

Friend and fellow modeler Paster Burton Maxwell passed away March 4, 2019. His funeral service was held Saturday, March 9, 2019. Burton was a consummate modeler, scratch-building almost everything including engines and vehicles. His HO Westside Lumber Co. layout was a delight to behold. It was dismantled shortly before his death. His creation lives on in our memories and photos.



The By-Laws of the San Diego Division combine the positions of **Chief Clerk** and **Paymaster** into one assignment.

The next election for Superintendent and Clerk/Paymaster will be at the Spring Meet on May 11, 2019 at the Short Track Club in Vista. Per our rules of operation, you must be present to vote. If you're interested in running for either position, please feel free to contact Ben or myself for more information. If you'd like to nominate someone for one of these positions, please discuss it with them before the election. And yes, they must be present to accept your nomination.

I'm looking forward to seeing you at our upcoming activities. All Aboard!

Don



**Directors' Report**

Trudy Seeley

---

2019 is off to a great start, and we have plenty of activities coming up!

**A quick look back:**

The **January layout tour** was on January 12<sup>th</sup> at the home of "Shotgun" Tom Kelly in El Cajon for the unveiling of his HO Train layout.

On February 9<sup>th</sup>, we held our **Winter Meet** at the Clairmont Christian Fellowship Church. On the schedule were 2 clinics (including a live hands-on clinic with MMR Dick Roberts on tree building), a Hobo Auction with over 100 items, & Show & Tell (two members brought dioramas to share).

**Our March layout tour** was at the amazing HO<sub>n</sub>3 layout of Chuck Molnar in Carlsbad - the Rio Grande Southern. The layout fills a three-car



---

### San Diego Division Officers

Director:  
Trudy Seeley

Superintendent:  
Don Fowler

Chief Clerk/Paymaster:  
Ben Sevier

---

### Websites

San Diego Division  
[www.sandiegodivision.org](http://www.sandiegodivision.org)  
PSR  
[www.psrnmra.org](http://www.psrnmra.org)  
NMRA  
[www.nmra.org](http://www.nmra.org)

---

Copyright 2018  
San Diego Division  
Pacific Southwest Region  
National Model Railroad Association



A scene from Burton's HO  
Westside Lumber Co.

---

garage!

Five members of the San Diego Division also made an all-day excursion (via Amtrak) to LA with the **Cajon Division** (see separate article with pictures!)

**The April layout tour** was on the 13<sup>th</sup> at Rudy Spano's in Clairmont, San Diego. It is of the Crystal River & Crystal River & San Juan Railroads (Colorado) in HO and Hon3!

**Looking Forward: Our Spring Meet will be May 11th.** Be sure to come and enjoy two great clinics. **Weathering Highlights Using Colored Pencils** by Pete Steinmetz. Bring a rail car you can practice this technique on. The other clinic is called **Chalk It Up** by Bob Chaparro. He will explain how railroad employees communicated using chalk marks on freight cars to convey important information that other railroad employees needed to know in order to perform their work. This was typical during the steam and diesel transition eras. A brief "hands-on" workshop will take place at the conclusion of the presentation. Participants will be able to make chalk markings on HO scale freight cars. Participants will need to provide a dark colored freight car or freight car body.

In addition the clinics and other regular Spring Meet activities, we will have officer elections. As our Superintendent and Clerk/Paymaster have both been in those positions for many years, they're looking for a break, so we'll be looking for a little new blood (although they will still be involved to support the new officers!) Also, please consider joining the committee to help out. The more folks we have contributing a bit of time, the less work for the few (and again, the new blood would be most welcome!)

**PLEASE!** Bring your ideas of what you'd like to see our Division do – more clinics...group kit builds... challenges/contests (structures, cars, dioramas)... trips to railroad/transportation sites or other museums? We need your input!

**I hope to see you all at our Spring Meet at the Antique Gas & Steam Museum (home of the Short Track Railroad club) in May!**

Trudy

---

## Cajon-SD-LA Divisions' Amtrak Trip to:

Views from the Live Steamers' Train



## LA Steamers Train Time Museum and Walt's Barn

By Trudy Seeley, SD Division Director

On March 17, five San Diego Division members joined 18 other PSR members from the Cajon Division & the LA Division for an Amtrak trip from San Diego to Union Station in LA. It was organized by the Cajon Division folks, who each joined at their nearest Amtrak stations on the way up. We were met by a bus at Union Station and arrived at the LA Live Steamers Railroad Museum where the LA Division folks & Live Steamers took very good care of us! We rode the trains there (they ran special afternoon trips just for the PSR members!) and had a great lunch that the Live Steamers also hosted. Their grounds are truly beautiful (as are their trains!)

Train Time Museum



We visited Walt's Barn on the Live Steamers premises and a docent told us some of the history of Walt Disney's fascination with trains. The bus also took folks in shifts to the Travel Town Railroad Museum where they had some beautiful old steam locomotives, cattle cars, cabooses, & passenger cars. There was also a model railroad layout running, although still partially under construction, at this museum. It was an enjoyable day getting to know fellow PSR members from the 3 divisions. Hopefully there will be more joint trips in the future!



Walt's Barn





[LA Live Steamers Railroad Museum]  
PSR members from LA, Cajon & SD Divisions.



Members riding the Live Steamers' trains

## Division News

### January Layout Tour

Tom Irwin's

AKA "Shotgun Tom Kelly"

**Irwood Railroad**



Shotgun Tom Kelly, in addition to being a member of the NMRA, is a well-known radio personality. He currently broadcasts on Sirius Radio. His HO 7' x 10' layout shares the garage with his radio studio. Tom said, "It's more to remember my dad than anything else." Interestingly, Tom's father was an engineer on the SF. who brought President Truman to San



the city, the original resident remains in San Diego, and was the last engineer to operate a steam engine in San Diego and the last to operate the famous E1 Warbonnet.

Lloyd and Betsy Kluesner, owners of Lloyd's Layouts in Paramount, California, built the layout following Tom's design. Lloyd and Betsy were present at the layout tour to answer questions about the layout and its construction. Many turned out to see and enjoy Tom's layout.

The layout sits on top of a pool table. Cables will eventually attach to the layout to hoist it to the ceiling when not in use. Lights underneath the layout will illuminate the pool table.

Tom had a professional video made of his layout. Click this link to watch:  
<https://www.youtube.com/watch?v=gDq3zp56Xkk&t=58s>

SHOW AND TELL!



Winter Meet

Held February 9, 2019

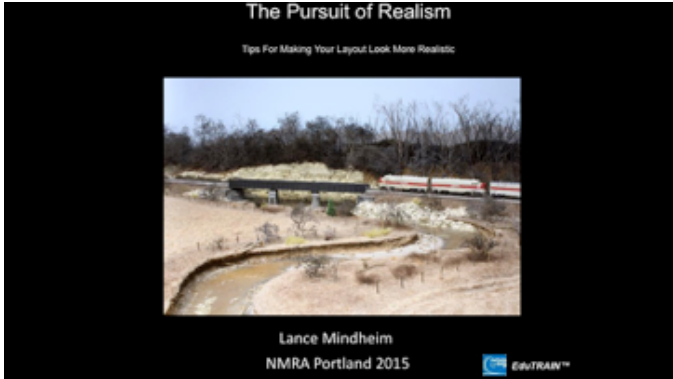
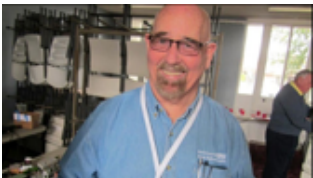
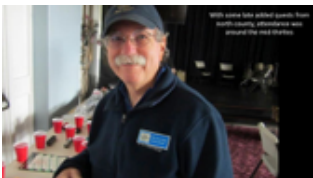
San Diego Division  
Winter Meet

February 9, 2019  
Clairemont Christian Church









Viewed a PowerPoint presentation by Lance Mindheim on the "Pursuit of Realism"



The second clinic was mainly about making twisted fiber conifers using this homemade device to secure and twist fibers cut from sisal. Presented by Dick Roberts, MMR

## March Layout Tour

Chuck Molnar's HO<sub>n</sub>3  
Rio Grand Southern Railroad

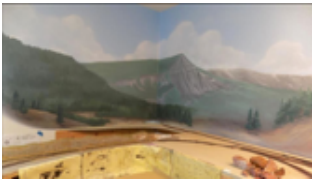




Our host and builder, Chuck Molnar, is a retired Math & Physics college professor. He models the RGS from Ridgway to Rico, endeavoring to capture the essence and nostalgia of this famous narrow gauge line. Located in a three-car garage, Chuck built the layout in just 6 years with an amazing level of progress and quality. All track is hand-laid and he scratch-built all the bridges on the layout.

Chuck uses a series of steps to create his landforms. He starts with stacked foam insulation board shaped with a sur-foam plane, followed by a layer of plaster cloth covered by mixed plaster and assorted rock molds. All this is tied together with "Sculptamold" and various commercial and natural materials like ground foam and gravel. Chuck uses NCE throttles; the turnouts are push-pull manual mechanisms.

Thanks, Chuck, for the tour of a great layout!



**April Layout tour**  
 Rudy Spano's  
**Crystal River and San Juan Railroads**  
 HO-HOn3



At the urging of T.M. Davidson, the Crystal River Railroad Company was formed to build a narrow



gauge track that would carry silver ore and marble out of Crystal River Valley. This track reached Marble Springs in 1880 and joined the Denver & Rio Grande line at Glenwood Springs in 1887. After the quarry closed its doors, the railroad tried to bring in tourists, but the Crash in 1929 thwarted this plan. In 1930, the railroad closed. Parts of the graded trackbed remain as a hiking trail into Marble Springs.

In 2013 Rudy began efforts to recreate this standard gauge line south out of Carbondale to Redstone, the narrow gauge Highline up to Coal Basin and the standard gauge line from Redstone to the town of Marble. Coal Basin was the location of a coal mine, Redstone was the site of the coking operations and Marble was the location of the Marble Quarry and Mill. This is the source of the block of marble for the Tomb of the Unknown Soldier.

Located in a second story hobby room, most of this "G" shaped layout is steam only with two point-to-point lines as were the original railroads. The layout is operated using CVP Easy DCC. Tam Valley push button servos serve to control the turnouts. The scenery and structures are in various stages of completion with almost all track work done.

A mural backdrop depicts the actual Crystal River Valley, including the marble quarry. Pictures of the actual river valley were used to replicate the scenery on the backdrop.

### **PSR Forums**

The PSR member forums are now open on the PSR web site at: [www.psrnmra.org](http://www.psrnmra.org)

Click on the Forums tab, register your account, and participate in discussions, get up to date info on events, and ask questions of fellow members of the PSR and NMRA.

Do it TODAY!

Have you checked the San Diego Model Railroad Museum web site lately? There is a LOT going on there these days, and they can always use the support of all model railroaders!

Museum Web Site: <http://www.sdmm.org/>

*Copyright © 2019 San Diego Division, PSR, NMRA, All rights reserved.*

You are receiving this E Mail as a member of the San Diego Division of the NMRA. We will not share your E Mail or personal information with anyone outside the NMRA

**Our mailing address is:**

San Diego Division, PSR, NMRA  
12793 War Horse Street  
San Diego, Ca 92129

[Add us to your address book](#)

[unsubscribe from this list](#) [update subscription preferences](#)

