

MAIL HOOK

SAN DIEGO DIVISION, PSR-NMRA

1st Quarter, 2021 Edition

In this Issue:

Superintendent's Report

San Diego Division Zoom meetings

Articles:

The San Diego Model Railroad Museum's Erwin Welsch Memorial Research Library
By Rudy Spano

Local vendors relevant to Model Railroading
By Pete Steinmetz, Trudy Seely, Rudy Spano and Tim Foote

Events Calendar

Superintendent's Report



It's a New Year! No doubt, 2020 was difficult, and 2021 will have its challenges. Let's look for and find the good in the coming year and be thankful for opportunities to share the hobby with fellow NMRA members. Reach out to a fellow modeler you have not spoken to in a while. Send an email or pick up the phone! If you are in need or want to connect, you are free to reach out to any one of us listed on the contact page of the Division web site. You will find the link to the web page on the last page of this Mail Hook. Or you could join up with a virtual meet, we have one in San Diego every Second Saturday.

Speaking of virtual meets, I am writing this on the heels of our January Virtual Meet. Looking back, I realized we have produced a total of 8 such meets. Who'd have thought? It was not that long ago that I had no idea about a YouTube channel or Zoom! The most recent of those meetings are highlighted in this issue. All are available for viewing on the SD Division YouTube channel. The link is also on the last page of this Mail Hook.

Each month those meetings typically have between 30 and 40 in attendance, usually about 20 are San Diego members. From the beginning we decided invite beyond the boundaries of our local San Diego Division. So, we have participation from Cajon, AZ, LA, and beyond. The feedback has been positive, so we will continue to hold our monthly second Saturday events virtually until we can meet again in person.

Back in November, we had a wonderful presentation about the San Diego Model Railroad Museum by Anthony Ridenhour and his staff. In this issue, be sure to read Rudy Spano's article about the fine research library housed at the Museum.

If you need anything as you do your hobby at home, be sure to read the local vender spotlights.

Wishing you the best of 2021 and looking forward to when we can safely meet together in person once again.

Happy New Year & Happy Modeling!

Ryan

superintendent@sandiegodivision.org

Zoom meetings:

November 14, 2020



Layout tour- San Diego Model Railroad Museum, Executive Director Anthony Ridenhour and Museum Staff The staff at the San Diego Model Railroad Museum put together a very professional presentation on the various programs it has, including a kids program and covering the the makeup of the museum with its model railroad clubs and layouts.

Clinic- How to Make your own Resistor Wheels, Pete Steinmetz

Pete showed us how to install resistors across the wheels of freight or passenger cars using conductive glues, thus skipping the perilous steps for soldering. The resistors permit detection of the cars on your layout for block detection.



December 12, 2020,

Show & Tell, Holiday Modeling Contest.

The topics were Create & photograph a winter scene, a holiday train, a scene from your favorite holiday train greeting card. The winning entry is on the left by our superintendantt, Ryan. Tim Foote's entry was the Rhino Rights Group protesting Santa's Circus Train (below.) Entrants got gift certificates to Reeds.



Layout Tour: Dan Lewis presented his amazing N-scale layout which follows the prototype of the North Montana Line of the Milwaukee Road in central Montana in the fall, 1953.

The basement layout is 18x25' and not only depicts the actual railroad, but operations are a regular part of a round robin group of modelers in the NCR (north of Detroit).

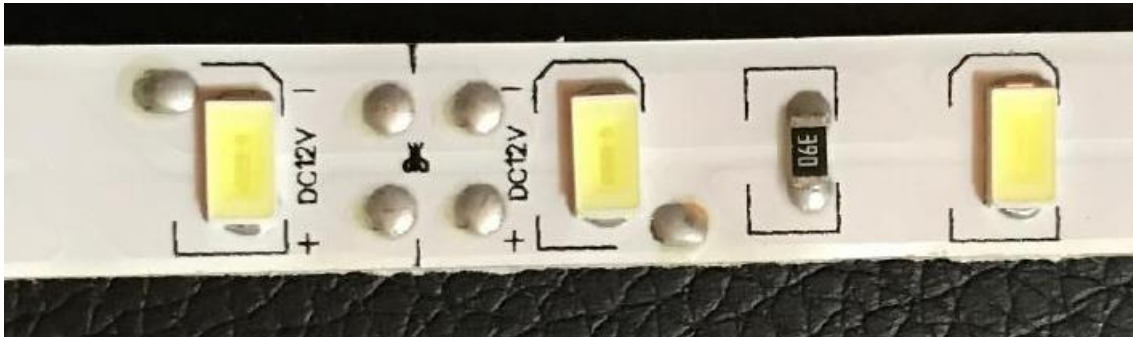
Dan is probably the most prolific N scale author in the hobby, with over 100 articles in the model press.

Clinic: "Just Roofs," by Dan Lewis which featured different roofing styles, materials, modeling, and finishing effects (useful in all scales). Dan's work was most recently published in Model Railroader magazine (June 2020), Railroad Model Craftsman (August 2020), NMRA Magazine (October 2020) and the new NMRA Calendar (2021). A few years back, one of his photographs was deemed among the 10 best photographs in Model Railroader Magazine history.

January 9, 2021

Show and Tell:

John Gornick- Layout lighting project, LED light strips



John gave a great presentation about the trials and tribulations of installing LED lighting on his two level layout. He shared with us an important error that he had made in estimating the amount of power needed for the strip lights which resulted in burning out a power supply. He also shared a technique of mounting the lights on an L shaped piece of aluminum which acts as a heat sink for the light strips that can get rather warm. If you want a PDF copy of the presentation, email the Mail Hook editor, mailhook@sandiegodivision.org or you can watch it on YouTube.

Layout Tour: Dick Trotter's freelance Coyote Pass and Northern Railroad, San Diego, California.

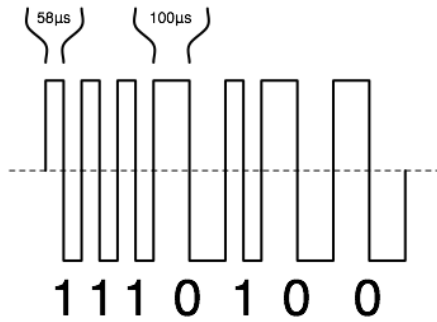


This museum quality HO scale DCC and Sound layout was first started in 1972. It was designed for switching operations and has been upgraded and expanded since. It is one of the most elaborate home layouts in San Diego.

The railroad continues weekly operations today with some of his crew taking part in switching operations for over 20 years. Operations can take place with a minimum of two people and a maximum of eight people. The

average number of people during operations is six people. Operations typically take about two hours. The most important part of this model railroad is for the entire crew to have fun.

While the layout is freelance in design, the era includes steam engines and 1st & 2nd generation diesel-electric locomotives. The railroad features four train routes based loosely in the Southwest (in the USA) and has modeled towns such as Tucson (Arizona), Yuma (Arizona), and Santa Fe (New Mexico).

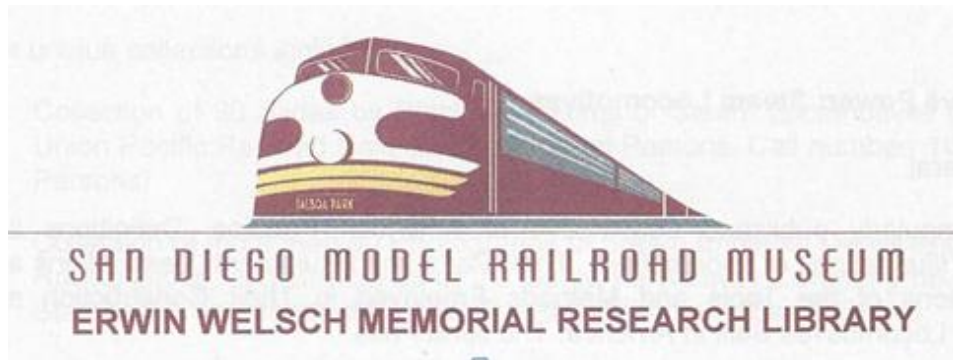


Clinic: Model Railroad Electronics Part II, by Tim Foote.

This clinic provided information for those who are new to electronics. Topics included how Digital Command Control works, DCC Decoders, amp draw stall test on an engine motor, using a multimeter to troubleshoot your layout, and tips on soldering.

If you want a PDF copy of the presentation, email the Mail Hook editor, mailhook@sandiegodivision.org or you can watch it on YouTube.

Articles:



By Rudy Spano

There is a magnificent treasure trove of railroad books, serial publications, photographs, timetables and technical guides and drawings waiting to be discovered at the San Diego Model Railroad Museum’s Erwin Welsch Memorial Research Library. Whether you are a prototype or freelance model railroader or a railroad fan and enthusiast, this collection will provide you with information and inspiration no matter your interest.



The Museum first opened in 1982. At the same time the two founding clubs, the La Mesa Model Railroad Club and the San Diego Model Railroad Association began building their layouts, donations for a library began coming in. In 1996, Erwin Welsch, PHD in Library Science, and La Mesa Model Railroad Club member realized the potential among the donations for a library. He began enthusiastically promoting the idea. In 2002 the Library was dedicated in its new space at the Museum. The Museum and Library received their initial accreditation from the American Alliance of Museums in 2003 becoming the only accredited Model Railroad Museum and

Library in America. As the catalogue continued to grow with donations both large and small, the Library enlarged its space to the present site in 2008. In 2008, Erwin Welsch retired as Librarian and the current Librarian Jim Helt took over. In 2009 the Library was officially dedicated as the Erwin Welsch Memorial Research Library.

The Library's focus is prototypical railroading in North America and worldwide with a regional emphasis on Southern California and the Southwest. The catalogue includes 6,216 books covering steam and diesel locomotives, freight and passenger rolling stock, railroad history both general and for specific rail lines. Some of the publications date back to the early 1900's or earlier including schematics and operation and maintenance manuals. In the catalogue there are 17,000 slides and pictures including the Brenda M. Bailey collection of 14,000 slides of locomotives and trains. These would be especially of interest to the prototype modeler or someone looking for weathering ideas. The Library also has 8,000 serial publications such as Model Railroad Magazine, Trains, Railroad Model Craftsman, O and N scale publications among the many magazines available. They also have copies of Baldwin Locomotives published by the Baldwin Company. These are a great source of modeling information and projects as well as history and railroading. For those interested in operations, there is an extensive collection of timetables dating back to the 1830's. There are also 1450 VHS tapes and DVD recordings of trains of various lines. In all, there are currently 50,475 items in the catalogue and more donations come in all the time.

The best way to experience the Library is in person. The Library is open to the public and you do not need to be a member of the Museum to take advantage of these resources. As a research library, most of their collection can be used in the library but cannot be checked out. VHS tapes and DVDs are the exception, these can be taken out by museum members on loan. While you cannot check out any of the publications, the Library can make copies of pages or articles for your personal use. The Library does not charge for this service, but a donation would be welcome. Currently, due to Covid-19, the Museum and the Library are closed. Hopefully the Museum and the Library will be open soon in 2021. Use of the Library may be by appointment only in the initial opening. Check the San Diego Model Railroad Museum website for updates. When available, call 619-320-4912 for an appointment.

Another way to access the Library resources is to use the online catalogue. Simply go to www.sdmmr.org and then under the heading, Learn, click the Our Library option. Once there you can search the catalogue and the timetables. This is a good way to confirm that the publication or item that you are interested in is in the catalogue. The Library does offer research services by email at Library@sdmmr.org. Depending on the scope of services, copying, etc. there may be a charge. I have used the Library to find articles in past issues of modeling magazines. I also used some of the technical books to research air brakes for a passenger model I was building. In my last visit, Jim Helt, the current Librarian, gave me a tour and I realized there is a whole world of railroading that I wasn't even aware of on the shelves and in the cabinets of the Erwin Welsch Memorial Research Library. I expect there are many more visits in my future to explore the stacks. If you haven't been to the Library, I highly recommend it. I believe that you will find it well worth your time. (special thanks to Jim Helt whose time and information were critical to writing this article)

Local vendors relevant to Model Railroading:

We have decided to highlight shops in the San Diego area that have supplies useful to modelers. These are not train stores, but stores that sell supplies useful to modelers.

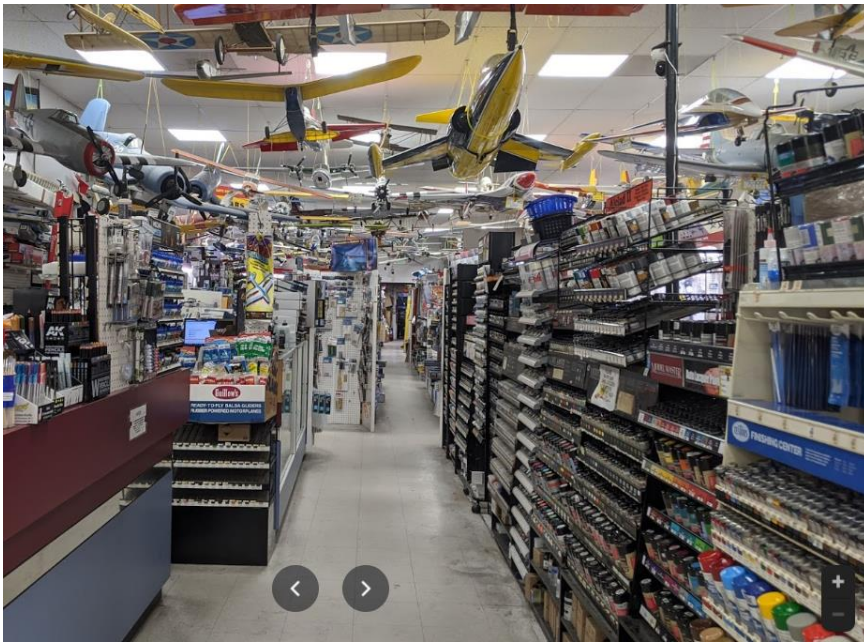
Discount Hobby Warehouse and Discount Hobby

By Pete Steinmetz

One of my "Go To" shops is Discount Hobby Warehouse.

Discount Hobby Warehouse
7644 Clairemont Mesa Blvd
San Diego, CA 92111
858-560-9633

Discount Hobby
2085 Montiel Rd
San Marcos, CA 92069
760-739-0672



Discount Hobby Warehouse has been a fixture in the San Diego modeling community for many years. Many model Railroaders have never heard of them because they do not sell trains, which is probably why they are still in business.

They do have a fantastic selection of Paint, glue, tools, and scratch building supplies. In the paint department, they sell Tamiya in both bottles and spray cans, Vallejo (Both Model Color, Model Air, Game Color, and Mecha Color). There are some AK Interactive weathering products and the AK Weathering Pencils. They sell the AK Pencils individually so a modeler can

try them out. There is a large rack of Mission Models paints. They also have the highlight pens that are popular with modelers.

There are nice displays of brass and styrene scratch building material. The San Marcos store is smaller than the San Diego store, but is well stocked with the essentials. There are a couple racks of quality tools. When Floquil was discontinued, I took my Floquil bottles down and did color matching with the Vallejo Model Air paint. They do have Santa Fe Blue, and Boxcar Red in stock. They just don't call it that.

Artist & Craftsman Supply

By Trudy Seeley

3804 Fourth Ave, San Diego, CA 92103

(619) 688-1911

sdoqa@artistcraftsman.com



This is a wonderful large art supply store in Hillcrest with super helpful staff. They carry all sorts of supplies for your layout and for building & weathering structures and cars. They have a huge selection of chinks (including Pan Pastels), paints and paint brushes, airbrushes, knives in a variety of shapes, and glues galore.

They have soldering supplies and all the traditional supplies for mixed media artists. Some money saving items are those that cost more to ship due to dimensions or weight, like Gator Board for structure bases, scale lumber &

styrene, and a variety of plasters. Their selection of train-specific items is not huge – although they do have some landscaping materials (trees, bushes, pipes & wire, etc.)

I spoke with them this week to check their hours: Mon.-Sat.: 9am -7pm and Sundays 11am – 6pm.

ePlastics/Ridout Plastics

By Rudy Spano

5535 Ruffin Road, San Diego, Ca 92123

<https://www.eplastics.com/>



ePlastics, a Ridout company, is a one-of-a-kind complete plastic manufacturing and supply store serving customers world-wide. They are housed in a 40,000 square foot warehouse and manufacturing facility on Ruffin Road. Their 3500 square foot showroom and their web presence are there to help their customers whether for a large government project or a DIY homeowners project. Even helping a Model Railroad Hobbyist. Their motto is, "When others can't...We can".

I first visited ePlastics looking for some acrylic solvent cement to glue together the two-part fascia control mounts sold by Tam Valley Depot for their Switchwright controllers. (They have since moved to a one piece, 3-D printed version). I found a good selection of Weld-on Acrylic adhesives as well as applicators. The product worked perfectly and I also found that it works well on Styrene. My next visit was to purchase some resin dyes. I used them to color the Envirotex Resin that I was using to create rivers on my layout. I have since learned that they carry casting resins and MEKP catalyst products. I plan to explore how I might use those in the future. They also sell a wide variety of



double-sided tapes: clear, paper and foam. There are many more products which I have yet to explore.

Of course, they sell sheets of plexiglass, polycarbonate, fiberglass, lighting diffusers as well as acrylic rods and tubes. They also pride themselves on their ability to create and fabricate functional as well as esthetic items. At the back of their show room is a gallery of past projects. One of the items that caught my eye was a display case for a G Scale locomotive and 3 car train. As they say, "we sell capabilities". They could cut guards for your layout edges. They could also drill the holes. With their heat processing, they could create curves as needed. If you would rather cut and drill your own plexi, ePlastics sells a variety of saber saw blades as well as drill bits for plastic. When you are modeling in plastic, don't hesitate to think of San Diego's own ePlastics as a source for supplies or fabrication.

[Editor' note: You can buy a 0.060" X 48" X 96" White Hi-Impact Styrene Sheet there (enough for a lifetime) for about \$50.]

WE-Supply

By Tim Foote

We-Supply National City
1636 D Ave, National City, CA 91950

We-Supply San Diego
4925 Mercury St, San Diego, CA 92111
<https://we-supply.com/>



WE-Supply (aka Willy's Electronic Supply) started out as a repair parts store for the TV and radio repair business. Their main focus is the Audio Video, Datacom, and Surveillance industries but they carry a diversity of electrical products. Useful items for model railroaders include wire, wire connectors, wire terminals, shrink tubing, switches, speakers, multimeters, LEDs, resistors, capacitors, electrical tools, soldering tools and soldering supplies. They also have some do it yourself electronic project kits. It is worth a trip to walk through the store and see what they might have for you. Don't hesitate to ask at the counter for something you can't find. They have an online catalog as well.



PARTNERSHIP PROGRAM

NMRA members can log in and click on the **Benefits** tab to view the **NMRA Partnership Program**. Please patronize all of our partners for some fantastic discounts as an NMRA member!

**Bear Creek Model
Railroad, LLC**

CatzPaw Innovations

Clever Models, LLC

CMR Products, LLC

Daylight Sales (Merchandise)

Deepwoods Software

Deluxe Materials

Digikeljs

East Coast Circuits

Gatorfoam

Great Decals!

Green Frog Productions

Hot Wire Foam Factory

K.I.S.S. Method, Inc.

LaBelle Woodworking Co.

LARC Products

Logic Rail Technologies

Micro-Mark

Mine Mount Models

Miniprints

MinuteMan Scale Models

Model Railroad Benchwork

Model Train Catalogue

Modelers Decals & Paint

Motrak Models

MRC (Model Rectifier Corp)

Nick and Nora Designs

NScale Works by Mike Holly

Old West Scenery

Ram Track

RR-CirKits

Rusty Stumps ***

Scale Model Plans

Scalecoat Paint

Scenery Solutions

Showcase Miniatures

Team Track Models

The N Scale Architech

The Old Depot Gallery

Tichy Train Group

Train Installations, LLC

Train Show, Inc.

TSG Multimedia ***

Trainmasters TV/Model

Railroad Hobbyist Store

UGEARS

Unreal Details

USA Airbrush Supply/

Badger Airbrush

WiFi Model Railroad, LLC

Nov 2020

[New Partners in **RED** ***]

Local Model RR Hobby Store Discounts: In addition to the NMRA Partnership Program which offers many great discounts, NMRA members are eligible for 10% discounts at Reed's Hobby Store in La Mesa and Arnie's Trains in Westminster. Some items may not be eligible for a discount. Please let the stores know that you are from the San Diego Division when you shop with them. For address information, please see the Benefits of Membership page on the San Diego Division web site, <https://www.sandiegodivision.org/>

EVENTS CALENDAR:



Model Railroad events in the Region, and by local clubs can be found on the following links. If you want your event listed please contact mailhook@sandiegodivision.org

San Diego Division Zoom Meeting Saturday, February 13, 2021, 1:00 pm (PST):
Show & Tell (30 minutes: 3-5 minutes for each person): We need people to volunteer for Show & Tell. Please email Ryan at superintendent@sandiegodivision.org
Layout Tour: Steve Bradley will present his HO_n3 SP Narrow Gauge layout. He has done a lot of scratch building and kit bashing. It is small but impressive.

Clinic: Robin Becker will present aspects of JMRI which is free software that permits you to control your DCC system, and interfaces with your decoder settings. It also permits you to set up a Wi-Fi system for train control and set up operations manifests.

LA Division events:

<https://www.ladiv-nmra.org/events.html>

Arizona Division events:

<http://www.azdiv-nmra.org/index.shtml>

PSR Convention

<https://psrconvention.org/OrangeBlossomSpecial2021/>

NMRA Pacific Southwest Region 2021 Convention

September 8 - 11, 2021

Hilton Hotel / Orange County Airport

NMRA Convention



<https://nmra.org/conventions/nmra-2021-santa-clara>

July 4 through July 11, 2021

Santa Clara, CA

From the Editor

Do your part for the club and submit an article:

The Mail Hook needs interesting articles and features. Please consider writing and submitting an article on a model railroading or railroading topic to share your knowledge with other modelers. It can be a how-to article or highlighting a project you are working on or any special knowledge you may have about a railroad. Maybe you could write an article about your layout progress, including pictures. It can be a half page or larger. Earn AP points or just make it a fun challenge. Note that we will accept most articles from other divisions as well.

Tim Foote

Acting Mail Hook Editor

mailhook@sandiegodivision.org

Submission Guidelines:

There is no compensation for articles submitted or published. Please Submit articles by email to the Mail Hook Editor at mailhook@sandiegodivision.org, with the submission attached as a text or MS word document or in the body of email message. Pictures can be attached separately to the same email. Submissions may be edited for length or formatting, or not used, at the discretion of the editor.

The following are the quarterly deadlines for submitting to the Mail Hook Editor:

First Qtr.-January 2; Second Qtr.-April 1, Third Qtr.- July 1, Fourth Qtr.-October 1

San Diego Division Officers

Director: Pete Steinmetz	Superintendent: Ryan Di Fede	Chief Clerk/Paymaster: Trudy Seeley
------------------------------------	--	---

San Diego Division Chairs

Membership Services: Rudy Spano	Layout Tours: Tim Foote
Contests: vacant	Meet Coordinator: Don Fowler, MMR
Clinics: vacant	Member Aid: Vacant
Publicity/Club Liaison: Vacant	Webmaster: Mike Hampson
Achievement Program: Rodger Gredvig, MMR	
"Mail Hook" Editor: Tim Foote (acting)	

Websites

San Diego Division website:
<https://www.sandiegodivision.org/>

San Diego Division Facebook Page:
<https://www.facebook.com/San-Diego-Division-PSR-NMRA-460628147317440/>

San Diego Division Facebook Group:
<https://www.facebook.com/groups/683893925747889/>

PSR
<https://www.psrnmra.org/>

NMRA
<https://nmra.org/>

Copyright 2021
San Diego Division
Pacific Southwest Region
National Model Railroad
Association

