

MAIL HOOK

SAN DIEGO DIVISION, PSR-NMRA

2ND QUARTER, 2018

Inside This Issue

- 1 Message from the Superintendent
- 2-3 Division News
- 5 New Members/From the Editor
- 6 The Value of Membership
- 7-8 Upcoming Events

Message from the Superintendent

I thought that you'd like to know that it's never too late for this old dog to learn new tricks. I have always considered myself pretty knowledgeable about most aspects of model railroading and have decided, after considerable research and contemplation, what I choose to embrace and what to reject. That said, I've never been a big fan of operations. It looked like a lot of labor and paperwork just to move a boxcar from here to there. No thanks! Besides, I've never seen a prototype car with a tab on it.

As many of you know, I'm building a new N scale layout. When I designed it, I had a pretty good idea about how I wanted to operate it. I planned to run through Southern Pacific symbol trains from one end of the layout to the other on a schedule with a fast clock, hump them over the yard, re-sort them into new trains and repeat the process. Sounds pretty "operationy", doesn't it?

I was progressing on the layout at a moderate pace (when I felt like it) when recently, two of my very good NMRA friends approached me about hosting operating sessions with a more evolved process. Of course I balked, explaining that the layout and I weren't yet ready for that step. They gently persisted and I eventually agreed to dip a toe into the operations waters. Utilizing JMRI, an operations roster is being developed along with manifests, switch lists and other (ugh) paperwork.

After two operating sessions, I have to say that I'm having a great time with this new aspect of enjoying my railroad, thanks to two special friends who saw further enjoyment potential in my layout. I'm sharing this story with you to point out a couple of personal learning points;

- A fresh perspective can be very valuable
- Don't shut yourself off to new ideas
- Change can be good
- NMRA friendships are awesome

*NMRA friendships are
awesome!*

Superintendent's Message continued on page 6

Upcoming Division Layout Tour

Mark your calendar now for the PSR San Diego Layout Tour in combination with The NCMRS Train Show & Swap Meet scheduled for Saturday, April 14, 2018. The event is put on by the North County Model Railroad Society and will be held at Oceanside's Heritage Park.

The layout tour officially starts at 10am, but come early for the swap meet at 8am. Buy Trains, eat food, and attend a clinic. Bring a model for AP Evaluation. This is a free event.

See more information on page 7

Division News



A liberal amount of humor...challenge and moderate insanity...

February Layout Tour

Bruce Deck's Olive and Homer RR – HO scale

“The Olive and Homer RR (O&H, no pun) is a freelance, HO scale railroad based loosely on a Southern Pacific theme. Occupying an area of approximately 20 by 20 feet the nearly 160 feet of main line is supported with hidden storage yards, feeding an on-line yard. Six towns along the mainline provide numerous industries to be serviced, with a wide variety of cars and products. All track work is complete and the industries and towns in place, but the scenery is only 35% finished. Operations are under DCC with a NCE system. A computer generated train order/ car card system is used for train movement, the use of which is still being tested. A liberal amount of humor on the layout and short passing sidings provides a challenge and moderate insanity when running.” -- Bruce Deck



You are looking at about half the layout
Designed for both operations and continuous running



His layout will be on tour at our Regional Convention this September



Division News

Winter Meet Snapshots

Photos by Bob Feuerstien & Roger Grevig
Captions by Rodger Grevig

SAN DIEGO DIVISION
WINTER MEET 2018



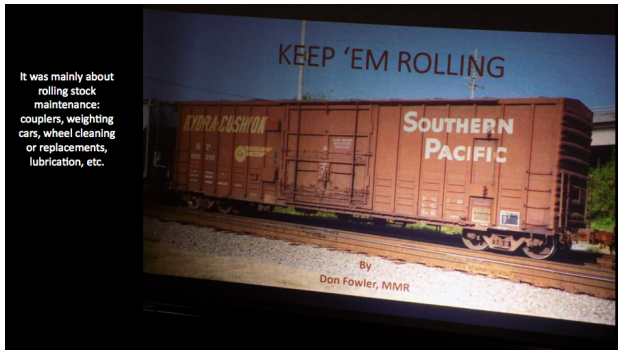
PACIFIC SOUTHWEST REGION



NATIONAL MODEL RAILROAD ASSOCIATION




Our Superintendent, Don Fowler, MMR, did one of the PPTs

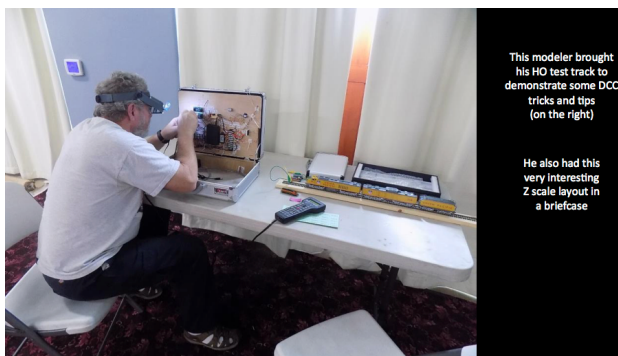


It was mainly about rolling stock maintenance: couplers, weighting cars, wheel cleaning or replacements, lubrication, etc.

By Don Fowler, MMR



For a relatively small group (20+), the silent auction had a lot of items, albeit, none were N scale



This modeler brought his HO test track to demonstrate some DCC tricks and tips (on the right)

He also had this very interesting Z scale layout in a briefcase



In terms of show-n-tell, one fellow brought some HO structures he built from Bar Mill Model kits.

Very nice work!



All of the electronics are accessed on the top of the layout by a series of buildings acting as switches

BLANK PAGE, KEEP GOING TO SEE MORE

New SD Division Members

Please welcome new members when you meet them at division and regional events. The following are members who have joined since the last Mail Hook: **Roy Davis, Jerry Shiller, Larry Harris, Stephen Downey, William Jones, Brenan Staples, Leo Staples.**

Here is a bio one of our new members, Roy Davis. Thanks Roy for contributing to the Mail Hook and the Division!

Roy Davis

I grew up 360 feet from the tracks (just measured it on Google Earth) that carried the PRR steam locos from Philadelphia to South Jersey and down to Atlantic City. My most memorable class field trip was riding that train across the bridge into Philly and visiting 30th Street Station where they had a huge model train layout, and I was hooked.

My Dad and I built a layout and Santa brought a Lionel steam engine that pulled Tuscan red passenger coaches. The next year brought an ABA set of New York Central diesels and an assortment of freight cars. The layout was a pair of 4'x4' and a pair of 2'x4' modules that made a nice loop with a hole in the middle. The module tops were ¼" plywood with no other bracing. Boy, did those trains roar on that huge sounding board! That big Lionel transformer was also the power supply for my early experiments in electrical engineering, like a carbon arc lamp and wireless power at a distance. Unfortunately, all that was packed away when I went off to college.

Now I am easing out of a career in electronics designing everything from CB radios, satellite components, wireless power and cell phone chips. At home I have a dozen clearstory windows with motorized operators that don't work right. I started a project to design a better motor controller and ended up with a DCC decoder. Funny how that happens ;-). Anyway, it gave me an excuse to read a lot about model trains, and real ones too. An ebay blue box loco kit and a few cars are due to be delivered tomorrow, so I am just beginning to dabble in model trains again.

From the Editor

Thank you for reading the Mail Hook. The previous issue was the first to be distributed by posting on the PSR Forums <http://www.psrnmra.org/forums/>. The Mail Hook was downloaded 55 times, but I know there are about 150 members in the San Diego Division. So spread the word to your friends about registering on the forums and accessing the Mail Hook.

Please give me feedback on what you would like to see featured in the Mail Hook. Better yet, if you would like to submit an article about on a Model Railroading topic, perhaps for AP points, or just for fun; please do not hesitate.

If you are a member of a club in the division and would like to see your events listed or would like to provide information or a feature about your club please submit that information to me.

I can be contacted at mailhook@sandiegodivision.org

Following are the quarterly deadlines for submitting to the Mail Hook:

January 2, April 1, July 1, October 1

Submissions: Contributions of articles on any railroad or model-railroading topic of interest to the membership are welcome. There is no compensation. If you are interested in submitting articles, event information, or other information of interest to members of the Division, please follow these guidelines:

1. Submit by email to the editor, with the submission attached as a text document.
2. Keep in mind that submissions may be edited for length or formatting, or not used, at the discretion of the editor.
3. Please keep photo file size below 1 MB.

The Value of Membership

NMRA Member Web Site

By: Pete Steinmetz

As a NMRA Member you please consider visiting the NMRA Member Web Site. First you will have to create an ID and Password. You will be impressed with what is available to you after you enter NMRA Member Site.

One of the new member benefits is a discount from many model railroad suppliers. This is the Partnership Program. Micro Mark has a 15% discount for NMRA Members. Also, Rusty Stumps, Scalecoat Paint, RR-Cirkits, Monster Modelworks, Motrak Models, are just some of the many that offer members discounts.

There is also a Discount Program for attractions such as museums. There are many listings with the corresponding member discounts. The listings are by state.

There is also a Hobby Shop Discount Program. Many of us already order from these merchants. Use of a few discounts can really save the modeler money.

Simply log into the NMRA Web Site www.nmra.org look for Member Home then scroll to Member Benefits. Both the Partnership Program and the Discount Program are listed there.

Under the same heading are a number of free videos, many from the pay sites including Model Railroad Academy, Model Railroader Video Plus, and TrainMasters TV.

Find subjects such as DCC Back EMF, Installing Tortoise Switch Machines, Airbrushing and Masking, Weathering Locomotives and Freight Cars, to name just a few.

Want to know about the AP Program? It's there. Want to find out about Contests? Want to look up some standards? Want clinics on Video? Want Edu Train Clinics? It is all there!

Do you want Publications, Data Sheets, or Regional and National Conventions? You will find them!

These are a few of the interesting areas of the NMRA.org web site. It's a good idea to log in and poke around the various areas.

Be sure to utilize all the benefits available to NMRA members. Consider using the NMRA Web Site as a learning tool to help enhance your modeling!

Membership Questions:

If you have questions or want to know about the many enhancements to your membership please contact Pete Steimetz membership@psrnmra.org. He has event schedules and can answer your questions regarding membership.

Message from the Superintendent, *continued from page 1*

I'm certainly no expert on this fun aspect of model railroading, but I'm learning and enjoying my layout in a whole new way. Our upcoming PSR Convention (Beach Ops 2018) has a special operations theme with operations themed clinics, proto and layout tours, and operating sessions on a wide variety of model railroads. If you enjoy operations or are looking for something to spark new vitality to your hobby enjoyment, you won't want to miss this awesome event.

We have already enjoyed some great events this year and we're just getting started. There is something going on almost every Saturday in April;

4/14 North County Model Railroad & Swap Meet (Oceanside)

4/21 Spring Rail (Whittier)

4/28 Cajon Meet (OERM – Perris)

Model railroading has never been more fun. I hope to see you soon at some of these upcoming events.

All Aboard!

Don Fowler
SD Division Superintendent

Upcoming Division Layout Tours

North County Model Railroad Society Train Show & Swap Meet

Date & Location

Saturday, April 14, 2018 at Oceanside's Heritage Park.

PSR San Diego Layout Tour

The layout tour officially starts at 10 am, but come early for the swap meet at 8am. Buy Trains, eat food, and attend a clinic. Bring a model for AP Evaluation. This is a free event with plenty of free parking.

Clinics

Free modeling clinics will be presented from 10 AM to 1 PM.

- Clinic 1 Scenery
- Clinic 2 Buying Freight Cars. What to look for in order to get a good car.
- Clinic 3 Loco Tune Up

Train Show & Swap Meet

The large HO scale model railroad layout with over 600-feet of mainline track will be in operation from 10 AM to 3 PM. Set in the 1950s, the miniature railroad depicts the Santa Fe from San Diego to Colton during the transition era. At Oceanside the main line turns inland (as the prototype did prior to 1900) and travels through Fallbrook, Temecula Canyon, and Perris before reaching Colton. All operations are controlled by smart-phones. Installation of a state-of-the-art signal system is nearing completion. Shop at the swap meet for model railroad items of all scales, accessories, railroadians, and railroad related publications. See the popular Trains4Kids HO scale layout will be open to all ages from 10 AM to 3 PM. Up to four kids can simultaneously run an HO train on the fully scenicked layout. A wide range of door prizes will be raffled off throughout the meets. Hot dogs, soda, coffee, and ice drinks will be available for purchase, or you can bring your own refreshments and lunch. Picnic tables are available in peaceful Heritage Park.

Vendor Information

Sellers Fee: A fee of \$10.00 will be charged to all vendors. Vendors may bring their own table(s) at no additional charge. Six-foot tables are available for rent at \$5.00 each. Availability is limited so reserve tables early. Vendor set-up will begin at 7:30 AM.

Sales Hours: Swap Meet sales will be conducted from 8:00 to 11:00 AM.

Reservations: To reserve a table or register as a vendor contact Rich Llewellyn at swapinfo@ncmrs.org. Thanks for sharing this announcement with your friends. We look forward to seeing you on April 14th

Snow Creek Railroad and Gopher Canyon Lines (DOUBLE BONUS EVENT!)

The San Diego Garden Railway Society has invited the membership of the NMRA San Diego Division to attend their layout tour of Bob Treat's Snow Creek Railroad on **Sunday, April 22 from 1 to 4pm**. As a bonus Steve Seidensticker is opening up the Gopher Canyon Lines (also a garden railroad) at the same time to both the Garden Railway Society and San Diego Division.

Locations

Snow Creek Railroad: 3650 Copley Ave., SD 92116

Gopher Canyon Lines: 2223 Commonwealth Ave., 92104

These are both excellent railroads well worth your time to come and enjoy!

Upcoming Division Events

Layout Tour 10am North County Model Railroad Society Heritage Park, Oceanside Swap Meet (8am), Clinics, Tour, fun!	April 14
Layout Tour BONUS 1pm to 4pm Bob Treat's Snow Creek Railroad Steve Seidensticker's Gopher Canyon Railroad	April 22
Spring Meet Short Track Railroad, Vista Clinics, Silent Auction, Show & Tell, Tour, Lunch	May 12
Layout Tour Layout/Location TBA	June 9

APRIL 2018						
S	M	T	W	T	F	S
1	2	3	4	5	6	7
8	9	10	11	12	13	14
15	16	17	18	19	20	21
22	23	24	25	26	27	28
29	30					

MAY 2018						
S	M	T	W	T	F	S
		1	2	3	4	5
6	7	8	9	10	11	12
13	14	15	16	17	18	19
20	21	22	23	24	25	26
27	28	29	30	31		

Other Upcoming Events

These are other Model Railroading events in the Division and Region, and by local clubs. If you want your event listed contact mailhook@sandiegodivision.org.

Spring Rail Swap meet, clinics, Contest Room, Displays	April 21
Cajon Division Spring Meet Orange Empire Railway Museum	April 27 – 28
Cajon Invitational Module Modelers Meet Irvine, CA	April 27 – 28

APRIL 2018						
S	M	T	W	T	F	S
					1	2
3	4	5	6	7	8	9
10	11	12	13	14	15	16
17	18	19	20	21	22	23
24	25	26	27	28	29	30

Flyers for these events are posted to the PSR SD Mail Hook Forum

PSR Regional Convention, San Diego Sept. 12 – 16
<http://www.psrconvention.org/beachops2018/index.html>

