

MAIL HOOK

SAN DIEGO DIVISION, PSR-NMRA

APRIL 2002



Mission Possible 2002

September 11 through September 15, 2002

Mission San Luis Rey
Oceanside, California



An Invitation from the Convention Chairman

The San Diego Division of the Pacific Southwest Region would like to invite you to attend what promises to be a really great Model Railroading experience, the PSR Annual Convention.

Mission Possible 2002 will be railroading at its finest, representing all the scales, manufacturers, vendors and modelers that make this such a great hobby. On top of all that, it's happening in beautiful Oceanside, in the land we call Paradise.

The convention committee is working very hard to provide you with the very best. We have lined up Prototype and Non-railroading tours, Layout Tours, Contests, Clinics and much, much more. In this announcement we have listed a number of the events that await you, and have more in process.

Speaking for all the Committee Chairmen and Chairwomen, we look forward to meeting you and enjoying this great hobby together.

Chuck Hart
Chairman

REMINDER!

**YOU CAN SAVE \$5 ON YOUR
CONVENTION REGISTRATION IF
YOU REGISTER BY JULY 31, 2002.**

USE THE FORM IN THIS ISSUE - TODAY!

Convention Rundown Publicity Chairman

Our convention plans really got into high gear this month, with patches and pins already acquired and on the Country Store's shelves. You will get a store order blank with your preregistration package.

Our local Mr. Railroad, John Sigurdson MMR, will be running our Train Show which will include all scales including live steamers on the show grounds.

Our clinician chairman now has over 17 clinic commitments on very interesting topics.

Jim Krater, our layout tour chairman, tells me he has over thirty tour stops lined up all over North San Diego, some of which have never been seen by our local model railroaders.

We are making an intensified effort to come up with prototype tours. With the country on a war footing, security for railroads becomes a very major issue.

An outstanding program for non-rails is being finalized. Three days of fun including a winery tour, antique shopping, and other events are planned.

Both silent and live auctions, and NMRA sanctioned contests in all categories are planned.

The convention hotel will be available on Wednesday evening for early registration and sign-in. When you register, tell them you are with "Mission Possible 2002". Remember, the pool and spa are most inviting on our pleasant September afternoons.

Sam Dale - Publicity

Schedule of Events (Proposed)

Wednesday - September 11th:

12 Noon. - 6:00 p.m.: Registration Open
1:00 p.m.- PSR Board of Directors Meeting

Thursday - September 12th:

8:00 a.m. - 6:00 p.m.: Registration Open
8:00 a.m. - 9:00 p.m. - Train/Trade Show (setup only)
8:00 a.m. - 5:00 p.m. : Contest room open
9:00 a.m. - 6:00 p.m.: Company Store Open
9:00 a.m. - 6:00 p.m.: Tour Desk Open
1:00 p.m. - 10:00 p.m. : Clinics
6:00 p.m. - 9:00 p.m. - Train Show (open to registrants only)

Friday, September 13th:

7:30 a.m. - 6:00 p.m.: Tour Desk Open
9:00 a.m. - 6:00 p.m.: Registration Open
9:00 a.m. - 9:00 p.m. - Train/Trade Show open to the public
9:00 a.m. - 10:00 p.m.: Clinics

Saturday, September 14th:

7:00 a.m.: HOBO Breakfast
8:00 a.m. - 11:00 a.m.: Registration
8:00 a.m. - 4:00 p.m. Train/Trade Show open to public:
9:00 a.m. - 11:00 a.m.: Company Store open
9:00 a.m. - 4:00 p.m.: Clinics
6:00 p.m.: Cocktails
7:00 p.m.: Banquet - Marty's Valley Inn - Keynote speaker - "What's in the future for model railroading"

Sunday, September 15th:

9:00 a.m.: PSR Annual Membership Meeting
There will be a shuttle from the hotel to the convention site on a regular basis Thursday through Saturday.



Best Western
Marty's Valley Inn
3240 Mission Avenue
Oceanside, California 92054
1-800-747-3529

Clinics

We have over 18 clinics lined up so far, with a variety of topics that we are sure you will find interesting. By the way, Hal Carstens plans to present a clinic (but he won't divulge the topic yet). Here's a brief synopsis:

Large Layout, Small Room - how a large layout can go with you and have a new life in a smaller space - Jim Hanna

The Two Lives of 4449 - a slide talk on a historic engine - Bob Moore

A Compilation of Weathering Techniques - slides and examples of weathering structures and equipment. - Steve Harris

Tuning and Repowering Diesel Locomotives - Joe Dalia (owner of Proto Power West)

Standards. What's That For - more enjoyment and less heartburn from following standards - Joe Dalia - owner of Proto Power West

Simple Signals for Model Layouts - A discussion for simplified strategies for adding signaling functions to a model layout - Mark Carnighan

Simple Wiring for Simple Signals - A demonstration of how to signal an average layout using little (or no) electronics - Mark Carnighan

Prototype Signaling Practices on the Santa Fe and Southern Pacific - Barry Draper

Resin Parts Casting From Rubber Molds - making hard to find parts - David D Allen

Southern Pacific Passenger Cars - SP passenger train operation, types of cars used, and how to better go about modeling them - Jim Nemitz

Gadgets and Gizmos, Tools for the Model Railroader - Duane Buck

Intermodal Modeling from the Prototype - Comparing what's out there to what is available in N and HO - George Johnsen

Special Trains Operation - speaker will share his experience as an engineer on movie, circus, railfan, welded rail, work train, and other special trains - Tommy Johnson

Kitbashing Buildings - will show you how to keep your railroad from looking like everyone else's - Carl Heimberger

Control Panel Design & Construction - Jay Sarno
Selected Electronics topics for the Model Railroader - Jay Sarno

Making a beach scene with water, sand, rocks, people, and junk - Todd Scott

The Palos Verdes Transfer Railroad - Sandy Friedfeld

Bob Moore - Clinic Chairman

Layout Tour

by Rodger Gredvig, MMR & Jim Krater

We are privileged to visit two new (or less familiar) layouts for our **Spring Layout Tour** on June 22, 2002. One is in Fallbrook, the other in Oceanside.

Reminiscent of the Chesapeake Cat logo, **Sam Dale's P.A.W.S.** layout features a similar emblem symbolizing the power of four major railroads operating on his N scale, **Pacific and Western States RR.** Familiar names like SP, UP, BNSF, and WP convey the sense of massive power moving tons of goods in a constant cacophony of activity. Literally hundreds of freight cars, scores of diesels and even 15 steam engines vie for trackage rights on 4 levels of layout. The PAWS is recognized by its commitment to big time railroading in the design of a 90 car classification yard, intermodal facility, and full engine servicing complex including a turntable and round house. Across the layout the viewer can see the development of everything from an ocean port to mountain mining and lumber processing. Although only partially scened, the PAWS is at a stage where the visitor can see and appreciate the construction techniques beneath the facade of plaster and foliage. Sam's garage layout is open June 22 from 9-11am.

Turn right on Iowa (Mission Realty on left) then right on Dagherty then left on Olive then right on Hillcrest to 714 Hillcrest Lane.

Bill Smith's Fire Mountain RR is a G scale garden layout that operates an assortment of motive power and trains from old time western themes to modern diesels. The layout covers his yard from fence to fence and incorporates bridges and trestles as trains negotiate 2% grades. There are many scratch built structures and hundreds of figures and vehicles accented by special lighting and sound. As the directions indicate (above), he is located at **1710 Hicks** near the junction of 78 and I-5 in Oceanside. He is open from noon to 2 pm.

To get to Bill Smith's layout in Oceanside from Fallbrook, you can go south on Stage Coach Lane to S. Mission Rd and continue west on highway 76 (Mission Rd.) from Bonsall to I-5. Go south on I-5 about a mile and take the Cassidy off ramp. Go left on Cassidy, left on Soto, right on Luaralyn, and finally left to 1710 Hicks. Or avoid slow cars (and 13 traffic lights) and return to I-15, go south to 78, west on 78 to the end where 78 turns into Vista Way (at I-5) turn right on Stewart, and then right on Cassidy, etc. (It's twice as far, but less time).



New product Review

I don't know about you, but to me, shiny, metal siderods on an otherwise weathered steam locomotive just don't look right. In the past I tried black paint-, weathered black paint; and oily black paint, among other things, with mixed results. Here's something that might be the answer. Try a new product called "Neolube", by PBL, PO Box 769, Ukiah, CA. 95482. I applied it, using a small brush, on the side rods etc., of all my steam locos. I think it does a fine job. *Not sure who sent this in to me - lost my notes, but if the author will let me know, I'll give him credit next time.* Ed.



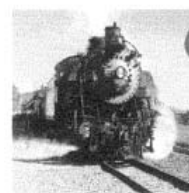
Lionel • American Flyer
Authorized Service Station 447



C & C Train Repair
Buy • Sell • Repair • Parts

4186 Adams Avenue
San Diego, CA 92116

(619) 281-1284



TrainQuest
MODEL TRAIN SUPER STORE

JIM BROMAR - General Manager

14161 ELSWORTH STREET, UNIT A
MORENO VALLEY, CA 92553-9007

Toll Free: 888-777-2258 Local: 909-656-6477

Fax: 909-656-5587 Web Site: www.trainquest.net

REED'S HOBBY SHOP

• Exclusively Trains •



Steve Bovee

all scales • craft kits • detail parts • scratch supplies
books • repairs • custom painting • special orders welcome

8039 La Mesa Blvd.
La Mesa, California 91941
(619) 464-1672

www.reeds-hobbies.com
E-mail: reeds@abac.com
Fax: (619) 464-6087

Directors Report

Rodger Gredvig, MMR

The PSR board of Directors (BOD) met March 16 at this year's convention site, Mission San Luis Rey. In addition to normal housekeeping chores, Trustee, Tom Draper, gave a report on the proposed plan for the Bulletin. In an effort to reduce costs and to promote the NMRA, National is considering dividing the Bulletin into two separate editions. One would be a slick-cover magazine that would be distributed on the newsstand like other major hobby magazines, and another more modest edition would carry the traditional NMRA news and data recommendations, for members only. It may be a while before this proposal comes to fruition. What do you think about this idea? Let's hear from the grassroots.

Another more serious matter arose after the BOD voted to require NMRA membership for registrants to PSR conventions beginning in 2003. The Tucson 2003 Convention Committee felt this would be an undue financial burden for them to bear, and therefore, notified the BOD of their intent to withdraw their bid. In the meantime, another group, out of Phoenix, has submitted their bid for the 2003 convention (which is pending).

Poway Station Exhibits at the North County Fair Mall

On April 6th, 2002 the Poway Station Model RR club set up a HO modular display at the North County Fair Mall. In addition to the HO layout,

Malls are a wonderful venue for sharing our hobby with the public.



they distributed literature for Operation Lifesaver and promotional material from Kalmbach and the NMRA. The North County Modular Club also had a small display including a 3x6' N scale Styrofoam kit by Woodland Scenics

which was donated by Reed's Hobbies. This N scale layout will be raffled off during the Candyland Festival in December sponsored by Poway Station.

Poway Station is a park and museum (address below) which features real railroad

artifacts, old time model railroad cars and equipment (with operating rides behind steam, trolley, and a 1938 Speeder), as well as this double main (track) working HO model layout.

There is also an N scale club and modular layout that, along with the HO club, participates in Poway Station events like the



The HO Layout has everything from cities to mountains to steel plants

Train Song Festival in October. Our NMRA Spring Meet will be hosted by the Poway Station clubs on May 18 (see details on insert).



The club is particularly proud of their 18 foot scene of Virginia coal mining.

The Poway-Midland Railroad (full size) is located in Old Poway Park, 14134 Midland Road, between Aubrey and Temple. They maintain a web site at:

<http://www.powaymidlandrr.org/>

The Poway All Scale Model RR Club also has a web site: http://go.to/poway_station

Report by Rodger Gredvig, MMR

Interested in seeing other Division newsletters? Go to TrainNet, where the *Mail Hook* and others are on line. <http://www.trainnet.org>

Orders: 1-800-642-9054
Phone: 1-619-294-8372
Fax: 1-619-294-3312

Rob Freeburn
Owner



Trains Are Good!
Railroad gifts & toys

www.trainsaregood.com 2802 Juan Street #10 (Old Town)
San Diego, CA 92110

SAN DIEGO DIVISION - PSR-NMRA

8th ANNUAL MODEL RAILROAD SWAP MEET

FREE FREE FREE FREE FREE FREE FREE

Hosted by the
POWAY STATION MODULAR RAILROAD CLUB

SATURDAY, MAY 18, 2002

10 am 'til Noon

at the
**POWAY COMMUNITY
CENTER AUDITORIUM**

Directions: From I-15 take Poway Road east approximately 4 miles to Bowron Road. Turn right on Bowron Road, then go to the first stop sign and turn right to the Poway Community Center Auditorium

THE SWAP MEET IS FREE TO BUYERS AND SELLERS
(TABLES ARE AVAILALBLE, OR BRING YOUR OWN)

Stick around for the Spring Meet Pot Luck Lunch and Clinic



“Mission Possible 2002”

September 12,13,14, 2002

Presented by the San Diego Division,
Pacific Southwest Region,
National Model Railroad Association

At the Mission San Luis Rey
Oceanside, California

Convention Registration Form

(Please Print) Date _____
 Name(s) _____ Phone () _____
 Address _____ NMRA# _____ PSR# _____
 _____ State _____ Zip _____
 Email _____ Primary Scale _____

Please indicate how you want each First and Last Name to appear on your name badges: _____

REGISTRATION FARES:

Adult Rail (March 31 through July 31, 2002)	No. _____ @ \$49.95	_____
	(after July 31, 2002)	No. _____ @ \$54.95
Youth 15-20	No. _____ @ \$19.95	_____
	(Children 14 and under FREE)	
Single Day (which? Thurs. Fri. Sat.)	No. _____ @ \$29.95	_____
Adult Non-Rail Program	No. _____ @ \$24.95	_____

Total Registration Fares \$ _____

Make checks payable to... “Mission Possible 2002”... and send along with this form to
 Ben Sevier, Registrar
 12793 War Horse Street Phone: 858-538-9863
 San Diego, CA 92129 Email: bsevier@pacbell.net

Cancellation Policy: Full refund, minus \$5.00 fee, when requested by August 13 and confirmed in writing (Email accepted).

Extra fare items to be announced at a later date

**Our convention accommodation of choice is the
 Best Western – Marty’s Valley Inn, 3240 Mission Avenue, Oceanside
 For reservations call 1-800-747-3529**

SAN DIEGO DIVISION PSR-NMRA

SPRING MEET

Saturday, May 18th - 11:00 am

Poway Community Center Auditorium

*FREE SWAP MEET
From 10 'til Noon*

DOOR PRIZES!

*FAVORITE MODEL
CONTEST!*

*CLINICS - 2 of them!
"Hair" & "AIR"
Painting Techniques*



Location: East of I-15, South of Poway Road, on
Bowron Road

POTLUCK LUNCH

POTLUCK SCHEDULE:

A TO E: SALAD OR MAIN DISH

F TO L: MAIN DISH

M TO R: DESSERT

S TO Z: APPETIZERS OR SNACKS

BRING YOUR OWN SERVING UTENSILS

THE SAN DIEGO DIVISION
WILL SUPPLY

PAPER PLATES, PLASTIC UTENSILS, CUPS,

NAPKINS, COFFEE AND SODAS

(YOU BRING THE APPETITE)



SCHEDULE OF PSR-NMRA EVENTS

May 2002

May 7 - Tue 7:00 pm **Convention Committee Meeting** - Short Track 'N Club House.

May 18 - Sat 10:00 am - **S.D. Division Annual Business Meeting & Free Swap Meet** - Poway (see flyer this issue).

June 2002

June 4 - Tue 7:00 pm - **Convention Committee Meeting** - Short Track 'N Club House

June 22 - **Spring layout tour** - details in this issue.

July 2002

July 9 - Tue 7:00 pm - **S.D. Division Business Meeting** - Short Track 'N Club House.

Jul 9 - Tue 8:00 pm - **Convention Committee Meeting** - Short Track 'N Club House

August 2002

Aug 10 - Sat 11:00 am - **S.D. Division Annual Picnic** - Rohr Park, Chula Vista

September 2002

Sept 12-15 **Mission Possible 2002 PSR Convention** - San Luis Rey Mission, Oceanside, CA

October 2002

Oct 7 - Mon 7:00 pm - **S.D. Division Business Meeting** - SDMMRM

November 2002

Nov 9 - Sat 5:00 pm - **S.D. Division Fall Meet** - San Diego Model Railroad Museum

OTHER EVENTS OF INTEREST

April 2002

Apr 27 & 28 - 9:00 am to 5:00 pm - RailFest 2002 - Orange Empire Railway Museum, Perris, CA

May 2002

May 4 & 5 - Sat 9:00 am to 6:00 pm, Sun 9:00 am to 5:00 pm - Fullerton Railroad Days, Fullerton Train Station, Fullerton, CA

July 2002

July 15 to 22 - "Tracks In The Sand" NMRA National Convention, Ft. Lauderdale, FL

Editor's Note

You might be wondering about the different format of this issue, and the content. This issue is a combined *Mail Hook* and Convention announcement. All area NMRA members who are not PSA members will be receiving the outer pages, and the center flyer. Division members will be getting the entire issue. Our hope is that we can attract interest in the convention, and in the PSA and/or the Division. Please feel free to pass it around! By the way, I'm running out of articles - if you've been thinking about writing one - DO IT!



THE WHISTLE STOP model trains

since 1949
"Your model railroad shop"
HO & N Scale, Books, Videos

SCOTT A. RHODES

(619) 295-7340

3834 Fourth Avenue, San Diego CA 92103
www.thewhistlestopsandiego.com

SAN DIEGO DIVISION STAFF

Superintendent:	Ken Allen	760 744-2769	kenallenea@aol.com
Chief Clerk/Paymaster:	Paul Schmitt	760 940-8000	flyers@inetworld.net
Director:	Rodger Gredvig MMR #218	858 571-7118	pgredvig@access1.net
<u>Mail Hook</u> Editor:	Ben Sevier	858 538-9863	bsevier@pacbell.net
Contests:	John Sigurdson MMR #236	760 747-1152	jtsig@home.com
Achievement Program:	Ed Hatch	858 274-2283	
Member Aid:	Bob Schimmel MMR #193	858 273-8511	
Layout Tours:	Rodger Gredvig MMR #218	858 571-7118	pgredvig@access1.net
Meets:	Ed Hatch	858 274-2283	
Convention:	Chuck Hart	858 748-6816	pce@cox.net
Membership:	Ben Sevier	858-538-9863	bsevier@pacbell.net
Nominations:	Pete Munoz	619 293-0162	
Clinics:	Tim Erdal	760 945-7230	

Layout Tours

There are a large number of self-guided layout tours this year, including G, 1 #1 scale, O (O, On2, On3), HO (HO, HOn2, HOn3), N Scale (N, Nn3), 1/2" Scale and 1:22.5 Scale.

Here are a just a few of the treats we have lined up:

Fire Mountain Railroad. G Scale. Bill Smith. Featured in San Diego Home and Garden, this large scale layout has 673 feet of track with 2 main lines, large yard, narrow gauge logging line, trestles, scratch built and kit structures, hundreds of figures, sound and lighting.

Onion Valley Mining & Lumber Co. HO Scale. Dave Balsler.

This layout is being built by the "Thursday Night Jazz and Pie Society." It consists of a transfer table, point to point main line with walk around throttles, two cab controls with four blocks, all brass locomotives and highly detailed and weathered rolling stock, surrounded by huge mountains and a beautiful back drop, with special lighting and sound.

O.G.S & A. Railroad. HO Scale. Ora G. Smith & Adrain Benard

Excellent layout with towering mountains and a series of industries with an HOn2 mining spur, dozens of mini scenes, with floor to ceiling back drops. This 13x20 foot layout appears twice as large as it measures. The main theme is American and Candian railroading, plus a European section with a double track continous loop. Don't forget your camera.

Deboise Western. HO scale. Art Dominy.

18x18 foot layout with three hundred feet of track in a mountainous setting. Three high bridges and high mountain passes are part of the beautiful scenery. Much detail with oil rigs, refinery, large storage yard and many town scenes, with unique scratch built structures with detailed interiors.

Two Century Railroad Park. HO Scale. Ed Hatch. A "one of a kind" layout with a three level helix and over four hundred feet of track. Designed for up to seven operators with forty nine blocks, the layout is 10x20 with very nice detail, and many scratch built and custom built structures .

PA, Reading & Seashore Lines. O Scale. Max Schwanda.

With its own separate, specially designed building in the back yard, Pennsy Steam is the power on this 13x30 foot layout. With point to point operation, in a completely landscaped layout with

a 1950's theme, it is not only superb but a lot of fun.

Max also has a collection of vintage auto to go with all that steam.

Santa Fe & Arizona Northern. HO scale. Randy Schissler.

The layout is a four by seven with a full backdrop that makes it look much larger. With several mini scenes and lots of animation and a big sound system, it's a must see.

Lode Stone & Iron. N Scale. Rodger Gredvig, MMR.

A 12x12 layout depicting an imaginary route between the Santa Fe and the D&RGW from Grand Junction to the lower Colorado River Basin, with lots of desert and mountain scenes. Featured in several magazine articles, it's well worth a trip.

Rail Tours

Security being a big issue to many of the companies today, they are not as open to public tours as before. However, we hope to be able to present the following tours (tentative):

Campo Museum, The Antique Gas & Steam Museum, the Port of San Diego grain loading facility, the switching yards in San Diego, the Red Line Trolley and the old Santa Fe Depot downtown

Non-Rail Events

The following Non-rail events are in the planning stages, every one of them worth attending:

Tour of a Winery in Rancho Bernardo

Visit to Old Town Carlsbad - antique shops, lunch, a stroll on the beach.

Tour of the Mission San Luis Rey

Crafting Adventures - glass etching, mosaics, watercolor painting, others.

"Bunco Party"

And of course, just relaxing with old (and new) friends in the lounge.

Volunteers Needed!

Looking for a way to help your division? There are many openings for volunteers to help put on the convention. If you would like to help, contact any of the division staff or convention committee.



MAIL HOOK

SPECIAL PSR CONVENTION ISSUE!

- When is it?
- Where is it going to be?
 - What activities are planned?
 - How do I sign up?

Details and forms in this issue!



MAIL HOOK

c/o Ben Sevier, Editor
12793 War Horse Street
San Diego, CA 92129

A quarterly publication of the **San Diego Division**
of the **Pacific Southwest Region**
of the **National Model Railroad Association**

